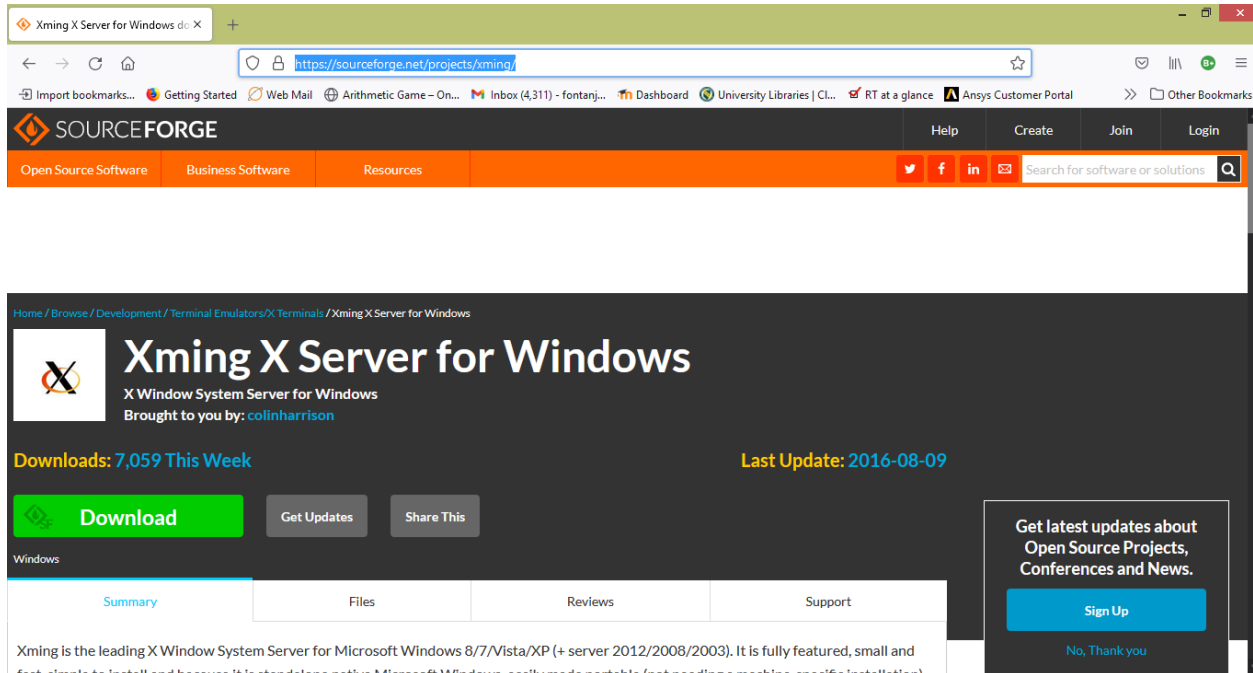


# How to run GUI applications on ACRES

## 1. Installing Xming

Download the free version of Xming from SourceForge.net: <https://sourceforge.net/projects/xming/>

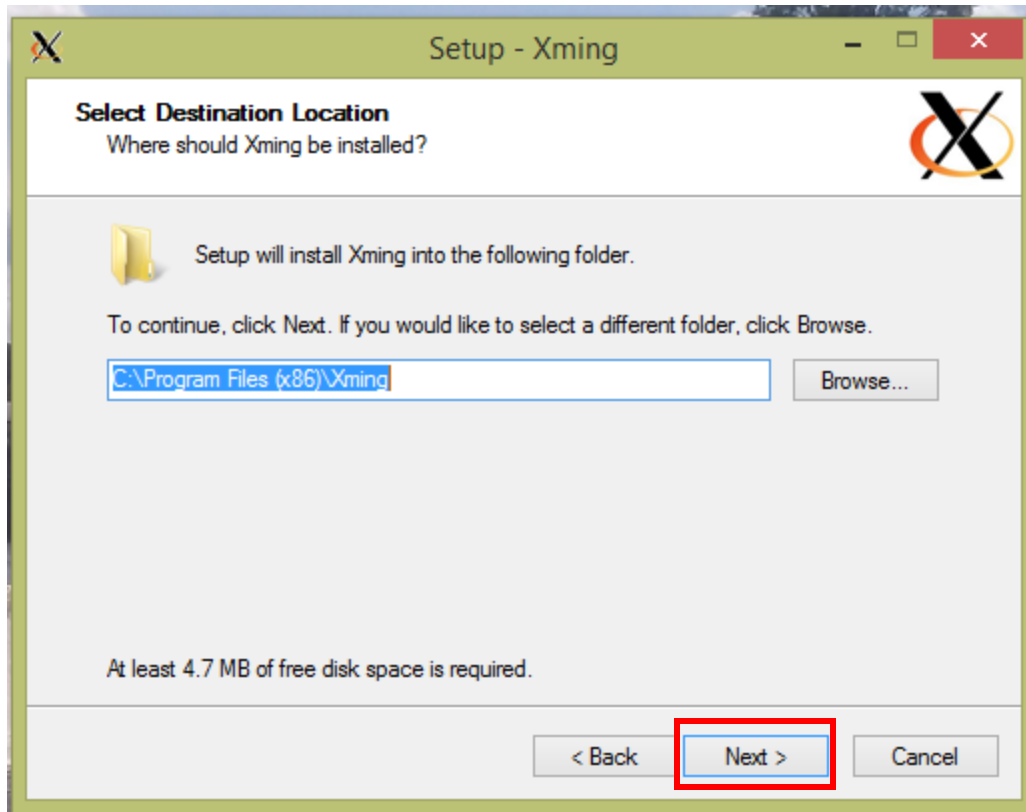


After downloading, launch the installer, which should be located in the Downloads folder:

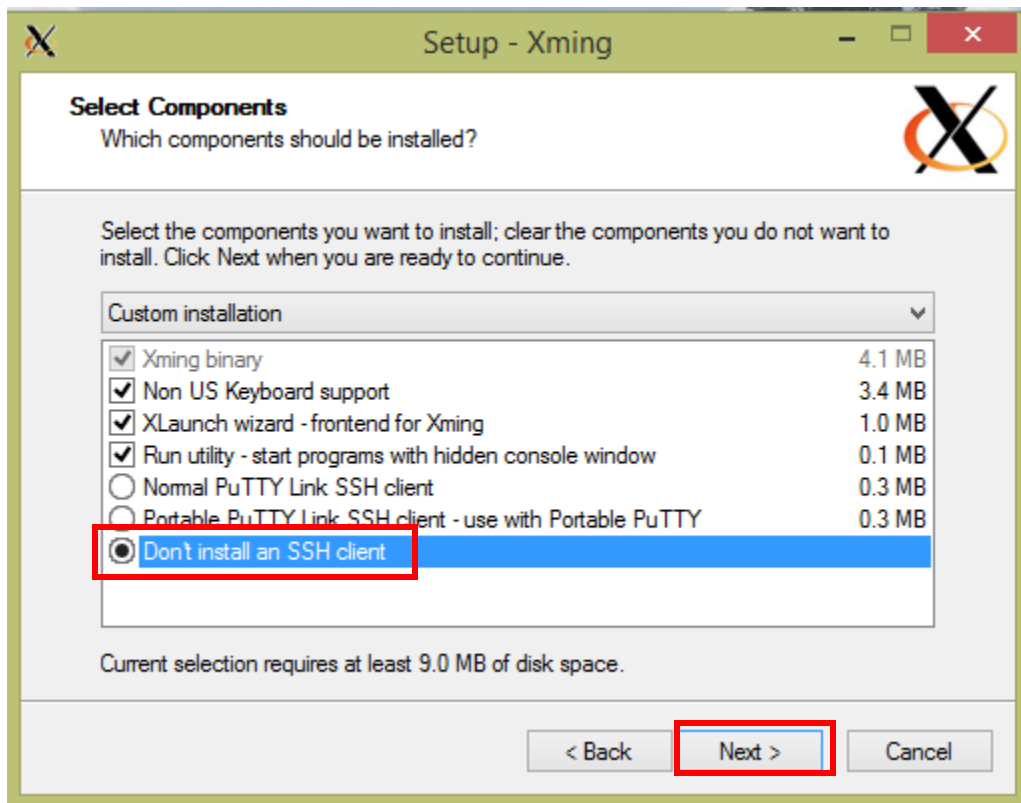
**Xming-6-9-0-31.setup.exe**

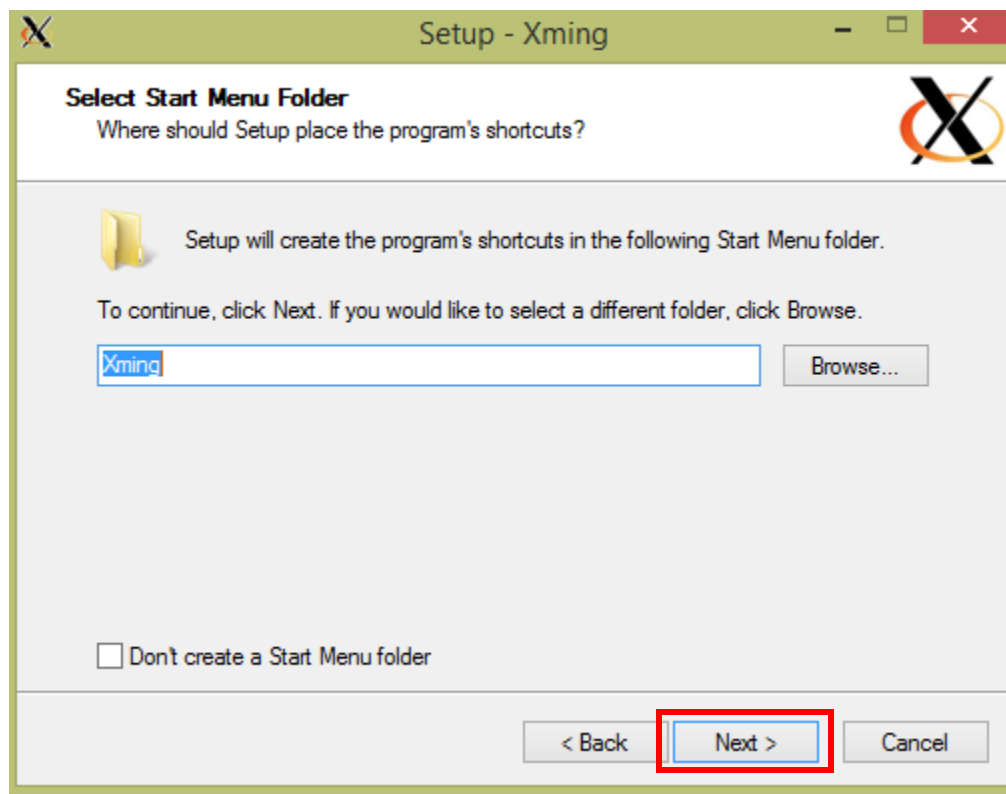
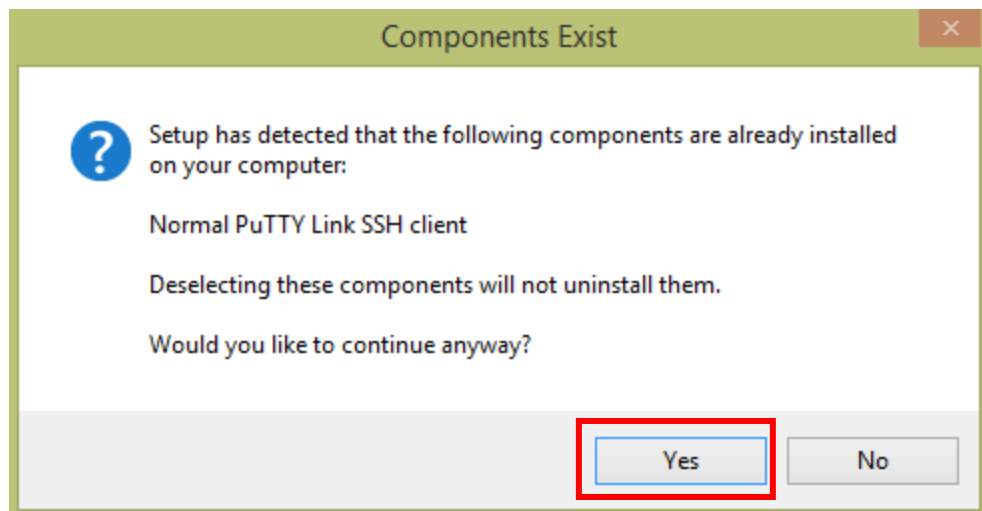
Follow the installation instructions:



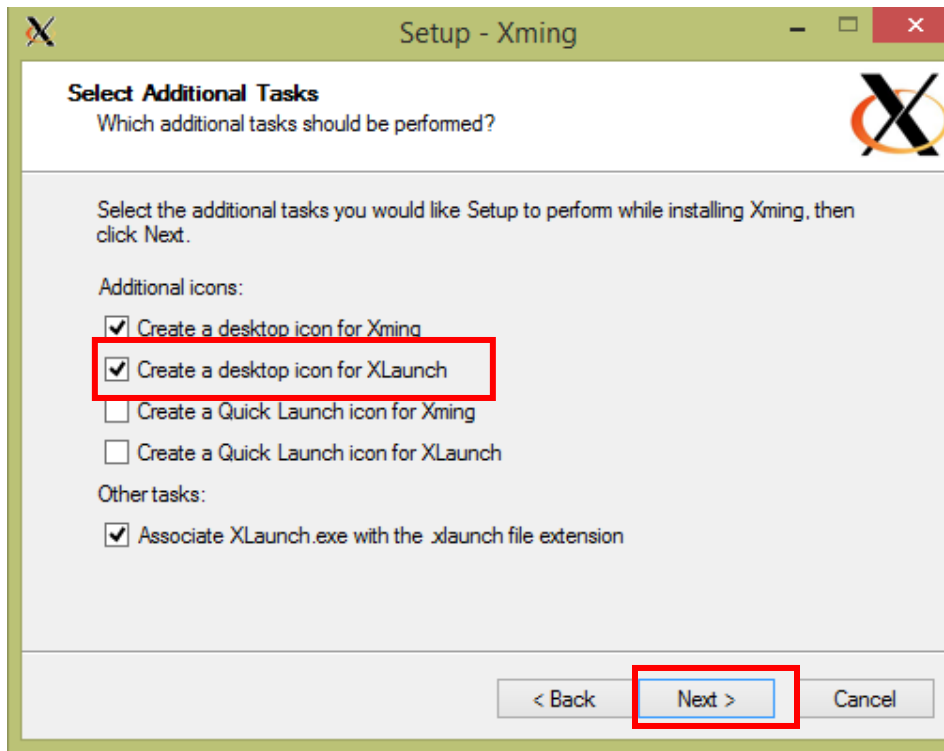


If PuTTY is already installed on your PC, choose not to install an SSH client here:





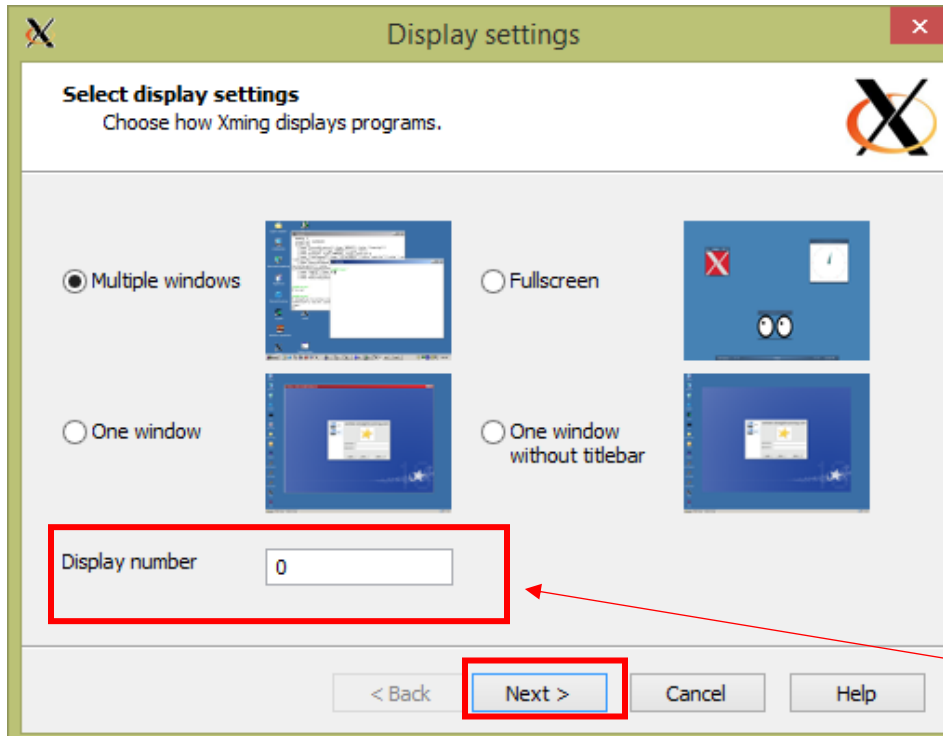
Make an “XLaunch” shortcut for convenience:



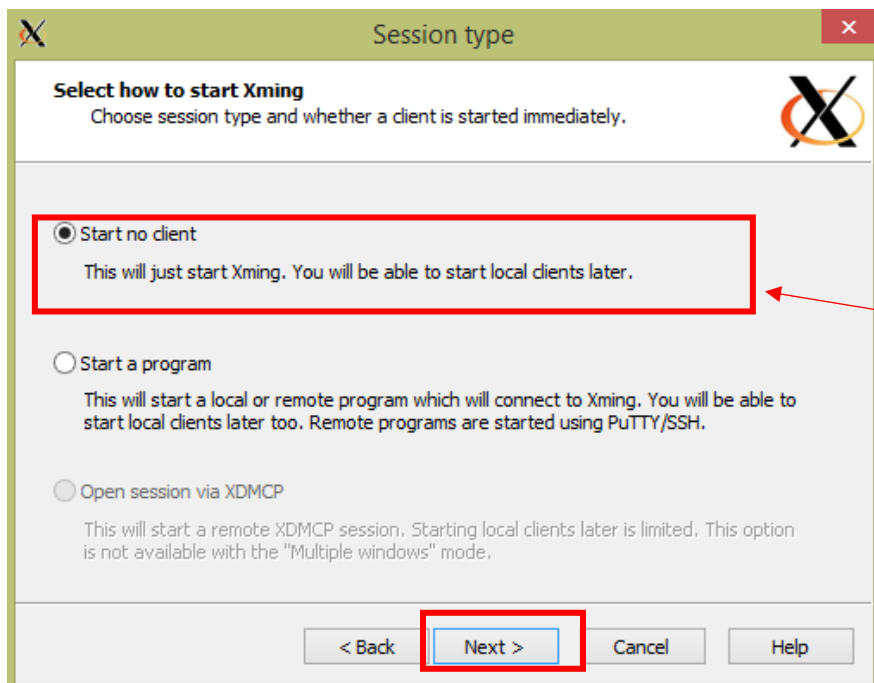
Click “Finish” when it is done installing.

## 2. To Launch Xming



To use Xming, double-click on the “XLaunch” shortcut, then configure the settings: (you should be able to leave all settings at the default, and just click “Next”, “Next”, ..., “Next”, “Finish”)




Keep Display 0



If you're used to starting PuTTY by itself, this option is probably easier.

 Additional parameters 

**Specify parameter settings**  
Enter clipboard, remote font server, and all other parameters. 

☒ Clipboard  
Start the integrated clipboard manager

☐ No Access Control  
Disable Server Access Control

Remote font server (if any)

Additional parameters for Xming



Additional parameters for PuTTY or SSH


< Back

**Next >**

Cancel

Help

 Finish configuration 

**Configuration complete**  
Choose whether to save your settings to an XML file. 

Click Finish to start Xming.

You may also 'Save configuration' for re-use (run automatically or alter via -load option).

Save configuration

☐ Include PuTTY Password as insecure clear text

< Back

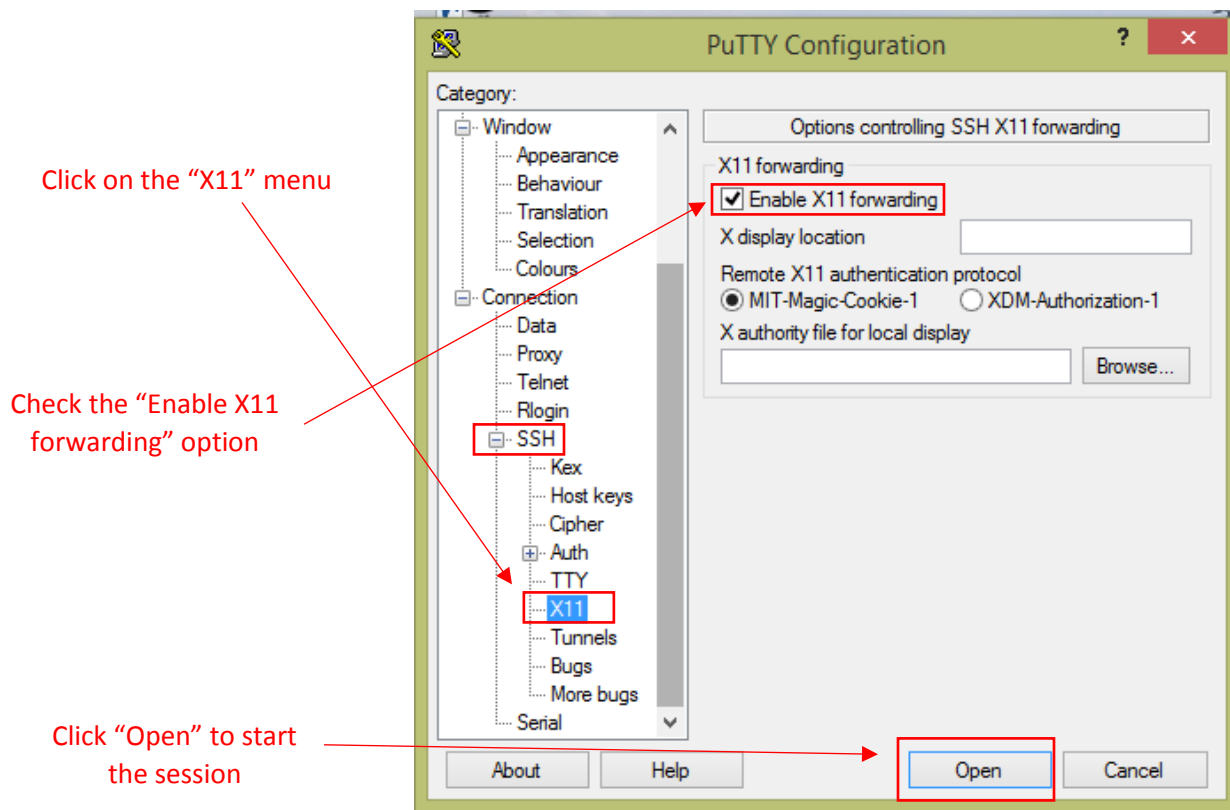
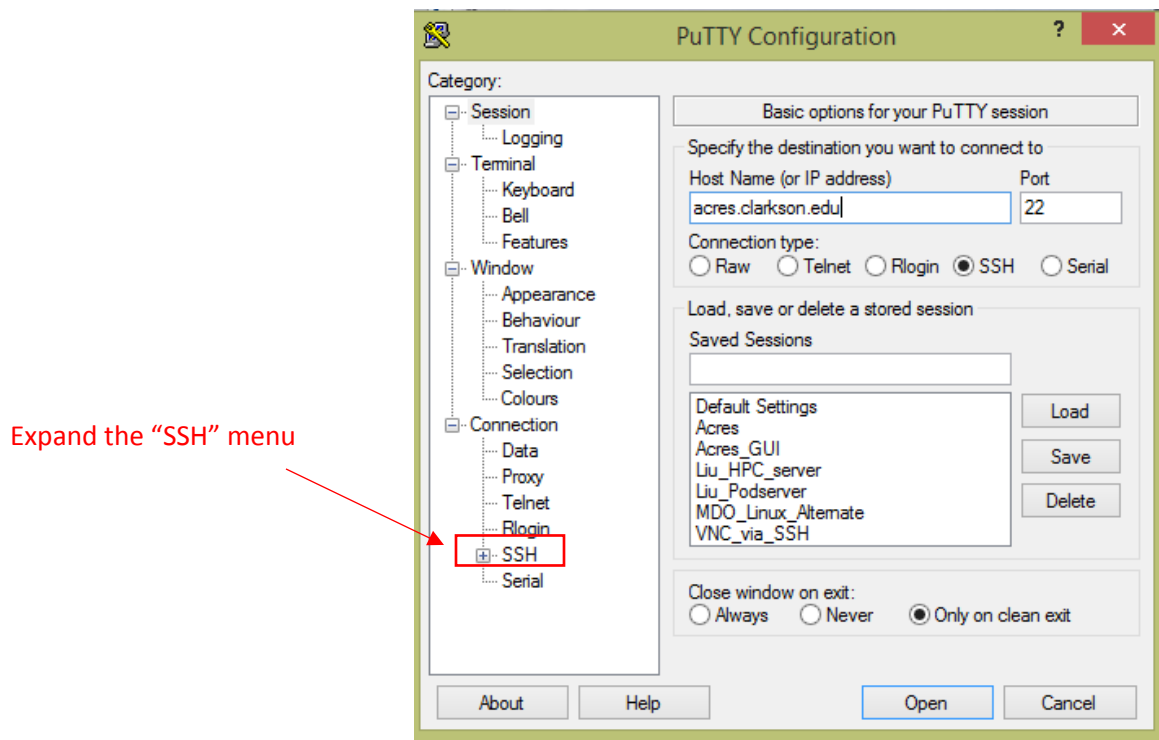
**Finish**

Cancel

Help

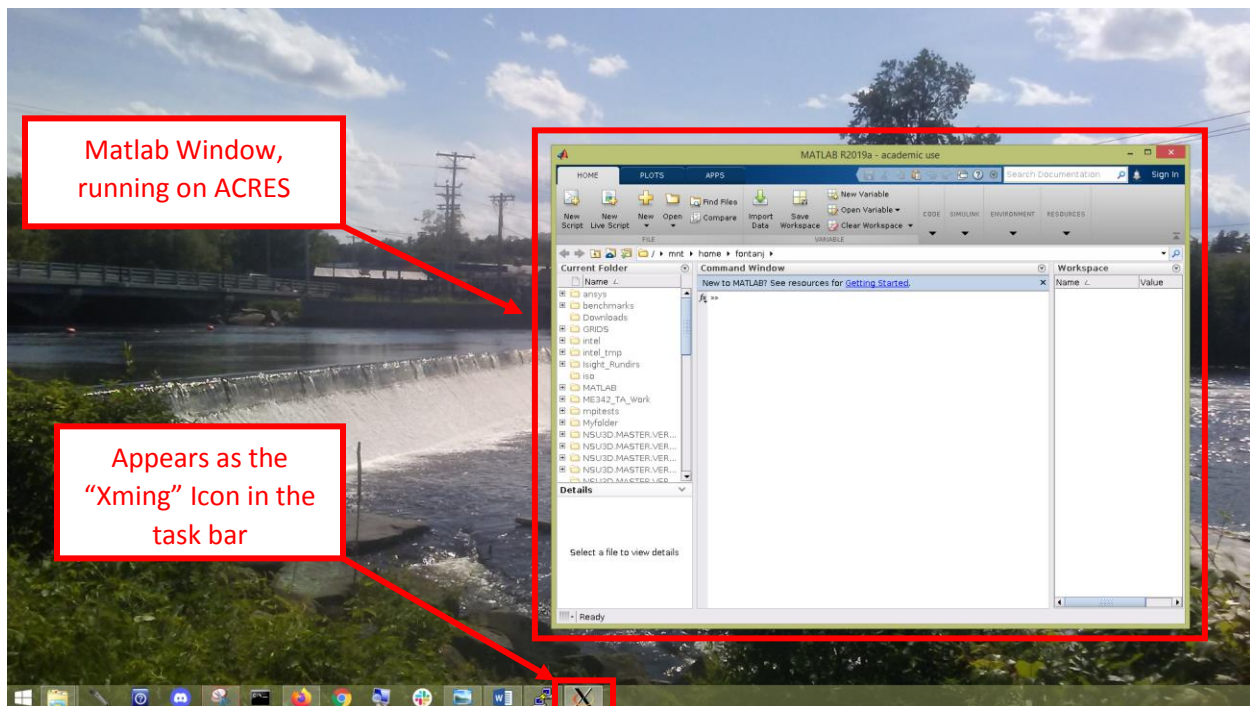
### 3. Enable X11 Forwarding in PuTTY SSH Session

Start PuTTY and configure the following settings:



After logging in to ACRES, you can start the GUI application from the command line, and the GUI window should appear on your screen. An example of this is shown below, using MATLAB:

```
fontanj@acres-head0:~  
== Quota report ==  
You are using 87568M of your 1024G quota.  
Your hard quota is 1536G. Any disk writes past this limit will fail.  
  
[fontanj@acres-head0 ~]$ module load MATLAB  
[fontanj@acres-head0 ~]$ matlab  
MATLAB is selecting SOFTWARE OPENGL rendering.
```



You can see that Xming is running in the background on your PC, and you may "right-click -> Exit" to exit out of Xming, when you are done (after closing your GUI programs).

